

# PRODUCT SHEET

## WELDED COUPLING - VACUUM/PERLITE INSULATED

Transfer Lines

Conditioning Equipment

Components

Johnston Coupling

Welded Coupling

Blindcap / Endpiece

VI Demaco valve

Gas lock

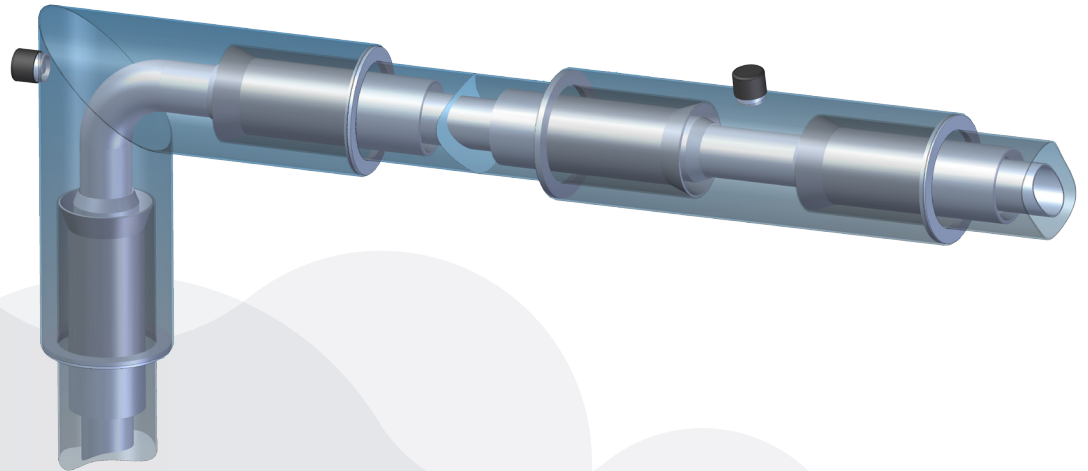
Highly flex

Pipe end heater

Filling Stations

Controlling

Welded couplings with vacuum or Perlite insulation are used to connect prefabricated vacuum-insulated pipe spools or vacuum-insulated flexible spools. This permanent connection between the spools assures maximum safety and allows testing by NDE on the process pipe. The version with vacuum insulation, which is established on-site after testing, provides the best possible reduction of heat loss. Both versions are easy to install and have a margin of flexibility in length. If there is a deviation between the initial engineering drawing and the actual circumstances on the construction site, the welded coupling can simply adjust the difference in length.



### BENEFITS

- Lowest heat loss values due to vacuum insulation
- Permanent connection allows NDE testing
- No limits in diameter and/or pressure
- Allows limited adjustments in pipe routing while installed
- Re-vacuuming of coupling connections is possible

### APPLICATION

- Ice free connection of 2 vacuum-insulated spools
- Ice-free connection with bulk tanks (if tank is prepared correctly)
- Where plug-in (Johnston) couplings are not available
- Low ambient temperature conditions (<-30°C)
- Suitable for all cryogenic medium and conditions
- Installations where high safety or quality aspects are required
- When zero leakage is allowed or regular inspection is hard to realise
- Tie-in connections with existing VI piping

### FEATURES

- All stainless steel
- Straight, Angled and/or Tee models available
- High vacuum level insulation
- Qualified welding to the highest standards
- Design independent of design codes like AD2000/EN13480/ASME B31.3

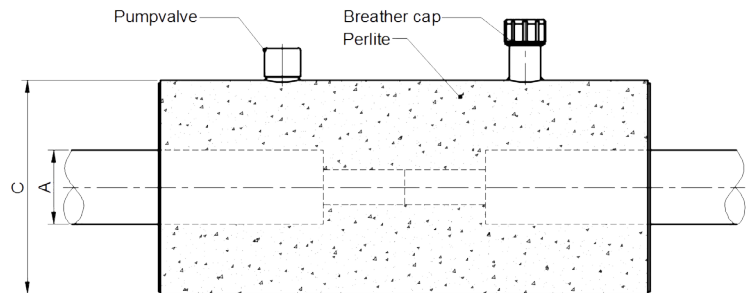
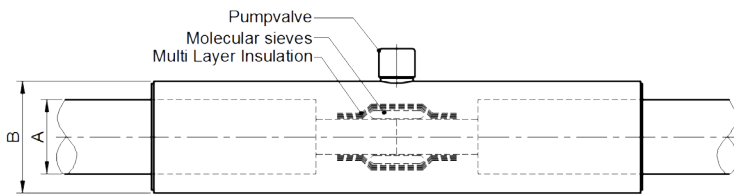
#### Remarks:

- Requires specialised tools
- Requires longer installation time compared to other coupling types

# PRODUCT SHEET

## WELDED COUPLING - VACUUM/PERLITE INSULATED

PIPE SIZE		VACUUM INSULATED		PERLITE INSULATED	
A - (mm)		VACUUM JACKET O.D. B - (mm)	HEAT LOSS INDICATION PER COUPLING (W)	WELD COUPLING SLEEVE C - (mm)	HEAT LOSS INDICATION PER COUPLING (W)
DN10	∅ 63.5	∅ 114	2.1	∅ 206	14
DN15	∅ 63.5	∅ 114	2.2	∅ 206	15
DN25	∅ 63.5	∅ 114	2.8	∅ 206	16
1"	∅ 76.1	∅ 114	3.1	∅ 219	17
1½"	∅ 88.9	∅ 114	3.5	∅ 219	18
2"	∅ 114.3	∅ 154	4.6	∅ 219	21
2½"	∅ 139.7	∅ 168	5.5	∅ 219	23
3"	∅ 154	∅ 206	7	∅ 256	25
4"	∅ 168.3	∅ 206	9	∅ 273	29
6"	∅ 219.1	∅ 256	14	∅ 306	40
8"	∅ 273	∅ 306	19	∅ 406	44



### MATERIALS

Vacuum jacket sleeve

1.4301/1.4306/1.4307 ~304/304L

Optional: 1.4401/1.4404 ~316/316L

Multi-Layer insulation

Glass paper and aluminium foil

### DOCUMENTATION

Standard according to Pressure Equipment Directive (PED)

Design according to AD2000, EN13480 or ASME B31.3  
(others on request)

Static vacuum with Multi-Layer insulation