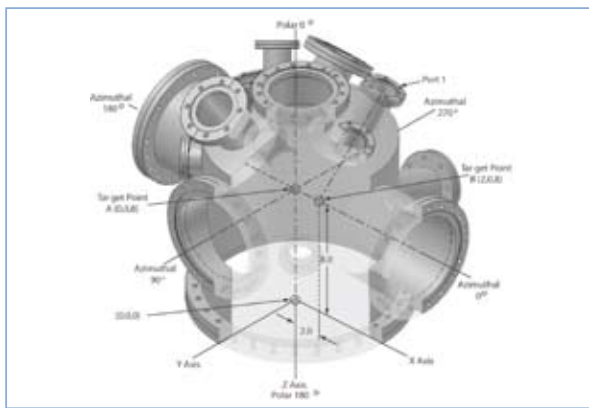


Dear sir, madam,

This is our latest Newsletter of February 2009. For you as DeMaCo customer, we have great news! Our Microsoft Dynamics ERP-system (bought in 2007) shows a huge output of new information about our stocks and delivery times. Thanks to this information, we are able to adjust our required stock products and our order confirmations should be more accurate. This means a big profit for you as our customer!

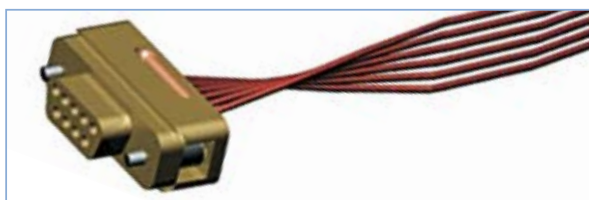
Digital drawings online available



More and more customers are asking for digital 3D drawings of our vacuum components. Our online catalog now shows many flanges and hardware with a ZIP-file, containing DXF; DWG; Unigraphics; Step en Solid edge drawings. Take a look in our online catalog and use the "Catalog search" field to find your product. With the article a "FILE" column indicates a ZIP-file. If you can't use the available formats, please contact us for the format you need.

In-vacuum cables

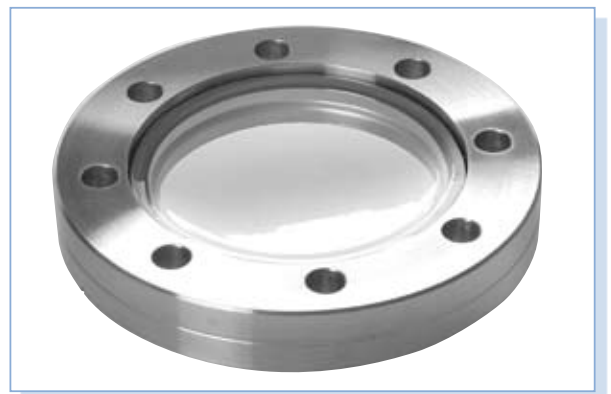
We supply in-vacuum cables in Single Strand AWG22 or AWG30 variety or 7-Strand Coaxial type AWG24 and AWG26.



These cables can be used in Ultra High Vacuum (UHV) systems with a temperature range up to 250° C. We can also supply "Ribbon" cables, including SUB-C or SUB-D connectors, varying from 9 to 50 connections.

Viewports

We receive many requests for viewports for a specific wavelength. Among others, we supply viewports with different Anti Reflection coatings, which suit specific wavelengths. Our Fused Silica viewports are available in three versions: Ultraviolet, Deep Ultraviolet or Excimer Ultraviolet.



Here a list of the different viewport materials in our programm:

- Kodial
- 7056 glass
- Sapphire (250nm to 4micron)
- Fused Silica (193nm to 2micron)
- Zinc Sulphide (8 to 12micron)
- Laser Optics with Anti Reflection coatings (193; 248; 780; 1064nm)

- Zinc Selenide (optional with Anti Reflection coating)
- Calcium Fluoride
- Magnesium Fluoride

Electrical Feedthroughs

Our electrical Feedthroughs are available with many connection types:

- with welding end instead of vacuum flange
- quick disconnect for baseplate assemblage
- KF or ISO connection
- including CF flange.



Electrical Feedthroughs also can be ordered as:

- Multipin version (Type C & Type D and MS Multipin version)
- Power from 0,5 to 60 kVolt
- Coax, like BNC, MHV, SHV, Type N, SMA and Microdot
- Thermocouple versions for different temperature ranges
- Ceramic breaks/isolators for vacuum or cryogenic applications.

Aluminum vacuum chambers

Besides our Stainless Steel and Pyrex vacuum chambers, DeMaCo also supplies Aluminum specials. These chambers are available as Cylinder or Bell Jar and you



can find them in our online catalog. The Aluminum chambers can be delivered including KF, ISO or CF flanges. The standard diameters vary from 150 to 500 mm.

“Full-range” vacuum gauge

The 390 & 392 series of Granville Phillips have a measurement range from Atm. to 1.10^{-9} mBar. Both models can be delivered with:

- Analog output
- RS-485
- Device Net
- Digital display
- 2 or 3 set points

Benefits of the 390 & 392: you only need 1 flange on your vacuum system and you have 1 analog output signal for



the whole pressure range. On and Off switch of the Ion gauge is completely automatic, to guarantee a long lifetime. The 390 model has a build-in differential pressure sensor, which notifies when the vacuum system has reached Atm. pressure. This set point can simply be used when venting of a Load-lock can be stopped.

KF from Polyoxymethylene -Delrin®

“POM-KF” parts and centering rings can be used in a vacuum range from Atm to 1.10^{-4} mBar and certainly are a low-price alternative to the metal KF version. Benefits of these POM-KF parts are:

- excellent quality in rough vacuum with low degas
- chemical-resistant
- high mechanic stiffness
- light weight
- electrical insulated



Highlights in December

In December, the Trading department of DeMaCo was extremely busy with:

- the acceptance of an AJA sputtering system at VU Amsterdam. The existing system with sputtering facility has been docked to a second sputtering chamber and second Load-lock.
- UCB Pharma in Braine-l'Alleud for delivery of a 4-Solvent Purification system, which directly will be connected to their existing Glovebox.
- Shell Research & Technology Centre in Amsterdam for delivery of two identical Gloveboxes for their new laboratory. These Gloveboxes will have many extra options, like: dry roughing pumps, freezer and box-cooling.
- the University Nijmegen for a complex 4” sample heater including rotation and control.